



BIZAUTOMATION CLOUD ERP EXTENDED PROFILE



OVERVIEW

BizAutomation cloud ERP is a system designed to streamline back-office operations. It is fully integrated with other BizAutomation products to enable all business functions to operate through a single platform to increase efficiency.

Focusing on automation and simplicity, BizAutomation cloud ERP is suited for SMBs with needs to increase productivity while allowing management of several separate business functions through a single platform.

The software has extensive manufacturing and distribution tools. Warehouse management tools allow control of multiple external locations, along with internal locations such as aisles and shelves, meaning BizAutomation cloud ERP keeps businesses informed of requirements on a real-time basis. This helps prevent wastage and increase revenue.

Minimal involvement is required at each stage of the sales process, with a simple “one click” sales fulfillment process finishing off orders quickly following creation and a variable pricing and promotions system which adapts based upon analytics and reports from historical data and preceding months. Through an automated shipping process, integrated with parcel shipping services including UPS, FedEx, and USPS, BizAutomation cloud ERP aims to expand and improve on existing functionality, while also allowing businesses which already use these services to continue operating without skipping a beat.

FEATURE OVERVIEW

SOFTWARE SPECIFICATION

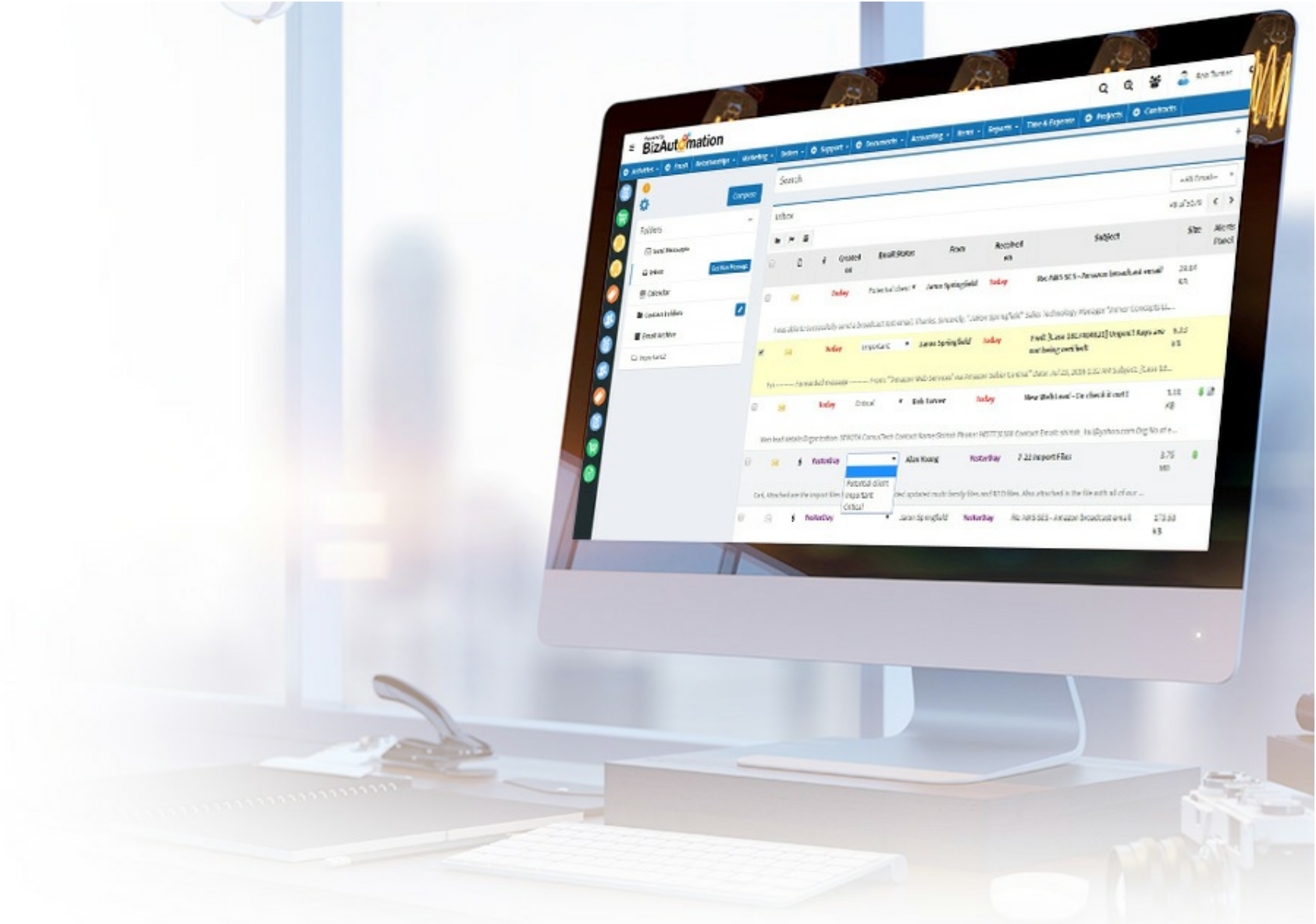
| | |
|-------------------------|-------------------------|
| OVERVIEW | |
| PRODUCT NAME | BizAutomation cloud ERP |
| BUSINESS SECTORS | |
| DISTRIBUTION | ✗ |
| GOVERNMENT & NPO | ✓ |
| MANUFACTURING | ✓ |
| RETAIL | ✓ |
| SERVICES | ✗ |
| INDUSTRY | |
| AEROSPACE & DEFENSE | ✗ |
| AUTOMOTIVE | ✗ |
| CHEMICAL | ✗ |
| CONSTRUCTION | ✗ |
| COSMETICS | ✗ |
| ELECTRONICS | ✗ |
| ENERGY/POWER/UTILITIES | ✗ |
| | ✗ |

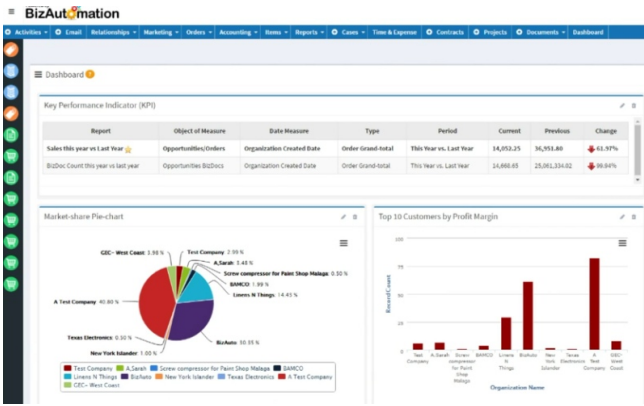
| | |
|-----------------------|---|
| ENGINEERING | |
| FASHION | ✗ |
| FINANCIAL SERVICES | ✓ |
| FOOD & BEVERAGE | ✗ |
| LOCAL GOVERNMENT | ✗ |
| MEDIA | ✗ |
| MEDICAL & HEALTHCARE | ✗ |
| METALWORKING | ✗ |
| OILFIELD | ✗ |
| PACKAGING | ✗ |
| PAINT & ADHESIVES | ✗ |
| PHARMACEUTICAL | ✗ |
| PLASTICS & RUBBER | ✗ |
| PRINT & DESIGN | ✗ |
| RENTAL | ✓ |
| TELECOMMUNICATIONS | ✗ |
| WOODWORKING | ✗ |
| CANNABIS | ✗ |
| EDUCATION | ✗ |
| NONPROFIT | ✗ |
| ERP SOFTWARE FEATURES | |

| | |
|---------------------------------|---|
| | |
| BILLING | ✗ |
| BUSINESS INTELLIGENCE/ANALYTICS | ✓ |
| COSTING | ✗ |
| CRM | ✓ |
| CUSTOMER SERVICE | ✗ |
| PRODUCT DESIGN | ✗ |
| FINANCIALS & ACCOUNTING | ✓ |
| HR | ✓ |
| INVENTORY MANAGEMENT | ✗ |
| ORDER MANAGEMENT | ✓ |
| PLANNING & SCHEDULING | ✗ |
| PROJECT MANAGEMENT | ✓ |
| PURCHASING | ✗ |
| QUALITY CONTROL | ✗ |
| SALES | ✓ |
| SHIPPING & DISTRIBUTION | ✓ |
| SUPPLY CHAIN MANAGEMENT | ✓ |
| WAREHOUSE MANAGEMENT | ✓ |
| ASSET MANAGEMENT | ✓ |
| | ✗ |

| | |
|----------------------------------|---------------|
| DOCUMENT MANAGEMENT | |
| CUSTOMER SUITABILITY | |
| ENTERPRISE (1000+ EMPLOYEES) | ✗ |
| MEDIUM SIZE (251-1000 EMPLOYEES) | ✗ |
| SMALL BUSINESS (1-250 EMPLOYEES) | ✓ |
| ADDITIONAL PRODUCT INFO | |
| MULTI LANGUAGE | ✗ |
| MULTI CURRENCY | ✓ |
| CUSTOMIZABLE | ✓ |
| SYSTEM HOSTING | |
| CLOUD | ✓ |
| INSTALLED ON PREMISE | ✗ |
| FURTHER INFORMATION | |
| PRICING | Not Available |

SOFTWARE SCREENSHOTS





BizAutomation

Activities | Email | Relationships | Orders | Accounting

Chart Of Accounts

Expand All | Collapse All

- Primary
 - Assets
 - Current Assets
 - Bank Account
 - 101 20222 9999.00
 - 102 Cash
 - 103 Un-deposited
 - 104 Bank account
 - 105 checking #1
 - 106 10122 0000.00
 - 107 Cash for 102
 - 108 Payroll - 175
 - 109 Sale of Asset
 - 110 101 101 0000.00
 - 111 101 101 0000.00
 - 112 101 101 0000.00
 - 113 101 101 0000.00
 - 114 101 101 0000.00
 - 115 101 101 0000.00
 - 116 101 101 0000.00
 - 117 101 101 0000.00
 - 118 101 101 0000.00
 - 119 101 101 0000.00
 - 120 101 101 0000.00
 - 121 101 101 0000.00
 - 122 101 101 0000.00
 - 123 101 101 0000.00
 - 124 101 101 0000.00
 - 125 101 101 0000.00
 - 126 101 101 0000.00
 - 127 101 101 0000.00
 - 128 101 101 0000.00
 - 129 101 101 0000.00
 - 130 101 101 0000.00
 - 131 101 101 0000.00
 - 132 101 101 0000.00
 - 133 101 101 0000.00
 - 134 101 101 0000.00
 - 135 101 101 0000.00
 - 136 101 101 0000.00
 - 137 101 101 0000.00
 - 138 101 101 0000.00
 - 139 101 101 0000.00
 - 140 101 101 0000.00
 - 141 101 101 0000.00
 - 142 101 101 0000.00
 - 143 101 101 0000.00
 - 144 101 101 0000.00
 - 145 101 101 0000.00
 - 146 101 101 0000.00
 - 147 101 101 0000.00
 - 148 101 101 0000.00
 - 149 101 101 0000.00
 - 150 101 101 0000.00
 - 151 101 101 0000.00
 - 152 101 101 0000.00
 - 153 101 101 0000.00
 - 154 101 101 0000.00
 - 155 101 101 0000.00
 - 156 101 101 0000.00
 - 157 101 101 0000.00
 - 158 101 101 0000.00
 - 159 101 101 0000.00
 - 160 101 101 0000.00
 - 161 101 101 0000.00
 - 162 101 101 0000.00
 - 163 101 101 0000.00
 - 164 101 101 0000.00
 - 165 101 101 0000.00
 - 166 101 101 0000.00
 - 167 101 101 0000.00
 - 168 101 101 0000.00
 - 169 101 101 0000.00
 - 170 101 101 0000.00
 - 171 101 101 0000.00
 - 172 101 101 0000.00
 - 173 101 101 0000.00
 - 174 101 101 0000.00
 - 175 101 101 0000.00
 - 176 101 101 0000.00
 - 177 101 101 0000.00
 - 178 101 101 0000.00
 - 179 101 101 0000.00
 - 180 101 101 0000.00
 - 181 101 101 0000.00
 - 182 101 101 0000.00
 - 183 101 101 0000.00
 - 184 101 101 0000.00
 - 185 101 101 0000.00
 - 186 101 101 0000.00
 - 187 101 101 0000.00
 - 188 101 101 0000.00
 - 189 101 101 0000.00
 - 190 101 101 0000.00
 - 191 101 101 0000.00
 - 192 101 101 0000.00
 - 193 101 101 0000.00
 - 194 101 101 0000.00
 - 195 101 101 0000.00
 - 196 101 101 0000.00
 - 197 101 101 0000.00
 - 198 101 101 0000.00
 - 199 101 101 0000.00
 - 200 101 101 0000.00

Sales Orders Showing records 1 to 20 of 111

| Organization Name | Sales Order Name | BizDocs | Order Status | |
|---------------------|--|-----------------------|------------------|----------|
| A Test Company | A Test Company-SO-July-2016-A2091760524 | INV-271, CUS-1 | Open Order | Ready to |
| BizAuto | BizAuto-SO-July-2016-A2090760523 | INV-270 | Open Order | Ready to |
| A Test Company | A Test Company-SO-June-2016-A2082370520 | INV-269 | Ready to Invoice | Not Appl |
| A Test Company | A Test Company-SO-June-2016-A2082350519 | PAC-45 | Ready to Invoice | Back Ord |
| BizAuto | BizAutomation-SO-June-2016-A2081680518 | CRE-3, PAC-40, PAC-41 | Ready to Invoice | Ready to |
| BizAuto | BizAutomation-SO-June-2016-A2081010517 | PAC-44 | Ready to Invoice | Ready to |
| A Test Company | A Test Company-SO-June-2016-A2080960514 | CER-25 | | Not Appl |
| AA Medical Customer | AA Medical Customer-SO-June-2016-A2079780513 | PAC-39, INV-267 | | Back Ord |

Activities | Email | Relationships | Orders | Accounting

Tom Burman | Record Owner | Tom Burman Dec 3 2007 7:40AM

Organization: BizAuto, Inc. | New Action

Contact Details

Contact Details | Areas of Interest | Orders | Survey History | Correspondence

First Name: Tom
Address: 12203 Main St., San Mateo, California, 90223, United States
Assistant First Name: Betty
Assistant Last Name: Johnson
Contact Position: CEO
Contact Phone: 408-443-5265