



**VISUAL ERP**

**EXTENDED PROFILE**



## OVERVIEW

Visual ERP is a manufacturing software system aiming to improve a manufacturer's competitive advantage. The software system is suitable for small to medium sized businesses in a range of industries.

Visual ERP allows organizations with multiple companies and sites to manage their processes from a single database. A simple and intuitive interface gives authorized users quick and easy-to-understand visual information covering inventory, material supply and demand as well as production schedules for multiple plants and factories. It allows manufacturers to build a custom product for a particular order and to configure existing stock for a regular customer.

The system has been built to allow integrations with third party applications including other ERPs, serial control and dimensional inventory tracking. VISUAL ERP is able to operate in multiple currencies and across multiple languages and can be configured for an organization to run in a single database or across several.

Visual ERP runs in a Windows environment but is accessible from any web browser and mobile phones. Synergy Resources also offer their own cloud hosting service as well as on-site installation.

## FEATURE OVERVIEW

## SOFTWARE SPECIFICATION

<b>OVERVIEW</b>	
PRODUCT NAME	Visual ERP
<b>BUSINESS SECTORS</b>	
DISTRIBUTION	✗
GOVERNMENT & NPO	✗
MANUFACTURING	✓
RETAIL	✗
SERVICES	✗
<b>INDUSTRY</b>	
AEROSPACE & DEFENSE	✓
AUTOMOTIVE	✓
CHEMICAL	✗
CONSTRUCTION	✓
COSMETICS	✗
ELECTRONICS	✓
	✓

ENERGY/POWER/UTILITIES	
ENGINEERING	✓
FASHION	✓
FINANCIAL SERVICES	✗
FOOD & BEVERAGE	✗
LOCAL GOVERNMENT	✗
MEDIA	✗
MEDICAL & HEALTHCARE	✓
METALWORKING	✓
OILFIELD	✓
PACKAGING	✓
PAINT & ADHESIVES	✗
PHARMACEUTICAL	✗
PLASTICS & RUBBER	✓
PRINT & DESIGN	✓
RENTAL	✗
TELECOMMUNICATIONS	✓
WOODWORKING	✓
CANNABIS	✗
EDUCATION	✗
	✗

<b>NONPROFIT</b>	
<b>ERP SOFTWARE FEATURES</b>	
<b>BILLING</b>	✓
<b>BUSINESS INTELLIGENCE/ANALYTICS</b>	✓
<b>COSTING</b>	✓
<b>CRM</b>	✓
<b>CUSTOMER SERVICE</b>	✓
<b>PRODUCT DESIGN</b>	✓
<b>FINANCIALS &amp; ACCOUNTING</b>	✓
<b>HR</b>	✓
<b>INVENTORY MANAGEMENT</b>	✓
<b>ORDER MANAGEMENT</b>	✓
<b>PLANNING &amp; SCHEDULING</b>	✓
<b>PROJECT MANAGEMENT</b>	✓
<b>PURCHASING</b>	✓
<b>QUALITY CONTROL</b>	✓
<b>SALES</b>	✓
<b>SHIPPING &amp; DISTRIBUTION</b>	✓
<b>SUPPLY CHAIN MANAGEMENT</b>	✓
<b>WAREHOUSE MANAGEMENT</b>	✓
<b>ASSET MANAGEMENT</b>	✓

DOCUMENT MANAGEMENT	✓
<b>CUSTOMER SUITABILITY</b>	
ENTERPRISE (1000+ EMPLOYEES)	✗
MEDIUM SIZE (251-1000 EMPLOYEES)	✓
SMALL BUSINESS (1-250 EMPLOYEES)	✓
<b>ADDITIONAL PRODUCT INFO</b>	
MULTI LANGUAGE	✓
MULTI CURRENCY	✓
CUSTOMIZABLE	✓
<b>SYSTEM HOSTING</b>	
CLOUD	✓
INSTALLED ON PREMISE	✓
<b>FURTHER INFORMATION</b>	
IMPLEMENTATION TIMEFRAME	4-6 Months

# SOFTWARE SCREENSHOTS

Manufacturing Window - Infor VISUAL - 55VE9 - [3000/1]

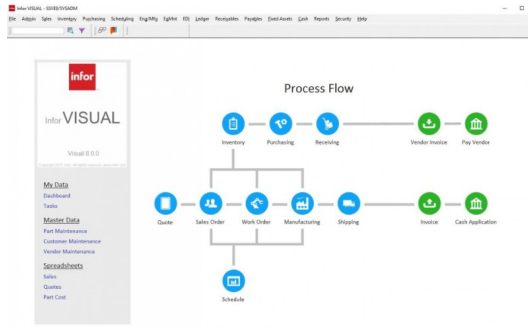
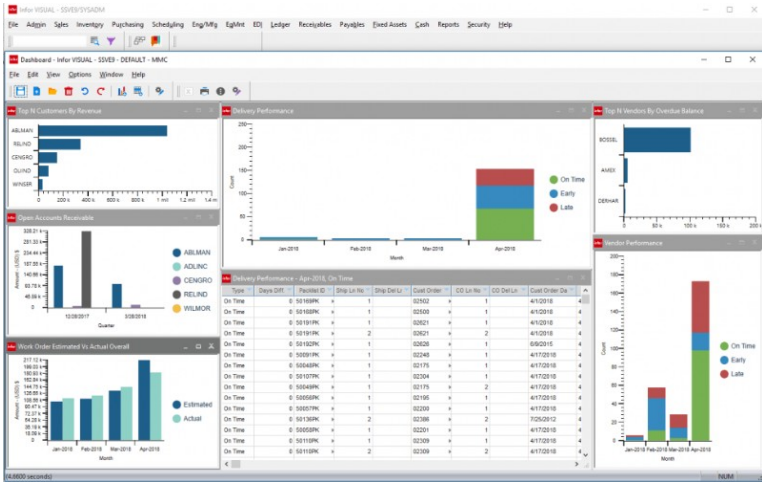
File Edit View Status Change Info Options Window Help

Estimated, Actual and Projected costs

File View Info F10 Options

Detail	Quantity	Estimated	Actual	Act Material	Act Labor	Act Burden	Act Service	Variance	Projected
- 3000/1 - A8000 - KR01 - E	10	5,789.23	3,013.68	2,433.28	236.41	294.00	49.99	2,775.55	6,726.05
5 ENGINEERING - Engineer	10	0.00	55.60	0.00	55.60	0.00	0.00	-55.60	55.60
- 10 CUTOFF SAW - DO-AL	10	170.00	263.92	98.60	60.54	104.78	0.00	-93.92	263.92
B1241 - 1/8" FLAT STOCK	10	100.00	96.60	96.60	0.00	0.00	0.00	1.40	96.60
20 BRAKE - BENDING DEP	10	166.00	183.71	0.00	68.21	115.50	0.00	-15.71	183.71
30 DRILL - STANLEY DRILL	10	228.00	74.35	0.00	39.41	34.94	0.00	153.65	169.35
40 GRIND - GRINDERS	10	70.68	0.34	0.00	0.10	0.24	0.00	70.34	35.88
<b>Total</b>	<b>10</b>	<b>5,789.23</b>	<b>3,013.68</b>	<b>2,433.28</b>	<b>236.41</b>	<b>294.00</b>	<b>49.99</b>	<b>2,775.55</b>	<b>6,726.05</b>

6/23/2014(4/25/2018) - 2/25/2018(4/17/20) ←



Item	Item	Item	Item	Item	Item	Item	Item	Item	Item
BASBY	Part 1002	Word Date	4/9/2018	Avail Qty	30	Start Qty	30	Comp Qty	30
FULL MATRESS 1	4020018	Finish Date	4/9/2018	Avail Qty	1	Start Qty	1	Comp Qty	1
133-001	4020018	Finish Date	4/27/2018	Avail Qty	0.5	Start Qty	0.5	Comp Qty	0.5
133-002	4020018	Finish Date	4/27/2018	Avail Qty	1	Start Qty	1	Comp Qty	1
TE-005	4020018	Finish Date	4/23/2018	Avail Qty	1	Start Qty	1	Comp Qty	1
FULL MATRESS 1	4020018	Finish Date	4/23/2018	Avail Qty	10	Start Qty	10	Comp Qty	10
90-100	4020018	Finish Date	4/23/2018	Avail Qty	1	Start Qty	1	Comp Qty	1
97-104-P	4020018	Finish Date	4/23/2018	Avail Qty	1	Start Qty	1	Comp Qty	1
97-104-P	4020018	Finish Date	4/27/2018	Avail Qty	0	Start Qty	0	Comp Qty	0

