

# **WP ERP (WORDPRESS ERP)**

## **EXTENDED PROFILE**

## OVERVIEW

WP ERP is a WordPress ERP plugin designed to help small and mid-sized businesses manage core internal operations like HR, CRM, and basic accounting, directly from the WordPress dashboard.

As the name suggests, it's for businesses that already use WordPress and want to centralize their processes without investing in a separate enterprise system.

WP ERP is less commonly used in environments that require advanced supply chain management, complex tax handling, or deep financial controls.

## DEPLOYMENT AND EXTENSIBILITY

WP ERP is self-hosted and depends on the underlying WordPress environment for performance, security, and backups. Functionality can be extended through paid add-ons and integrations. As with most WordPress-based systems, long-term scalability depends on hosting quality and site architecture.

For pricing information, please download the extended software profile.

As it operates as a modular ERP plugin, users can enable the components they need and ignore the rest. It installs like any standard WordPress plugin and uses the familiar WordPress interface, reducing the learning curve for teams already comfortable with the platform.

## EXPANDING ON TYPICAL USE CASES

- **HRM:** The HR module focuses on employee records, role management, attendance tracking, and leave requests. It supports basic HR workflows for smaller teams that do not require a dedicated HRMS.
- **CRM:** The CRM module stores contact data, tracks interactions, and supports simple sales pipeline management. It is commonly used to manage leads and customers generated through WordPress forms or WooCommerce activity.
- **Accounting:** WP ERP includes lightweight accounting tools such as income and expense tracking, invoicing, and basic financial reports. It's more of an entry-level accounting option than a replacement for full accounting suites.

## WOOCOMMERCE INTEGRATION

WP ERP integrates with WooCommerce through extensions that connect store data with CRM and accounting records. This allows WooCommerce orders, customers, and transactions to flow into the ERP, supporting customer lifecycle tracking and revenue reporting within WordPress.



SOFTWARE SPECIFICATION

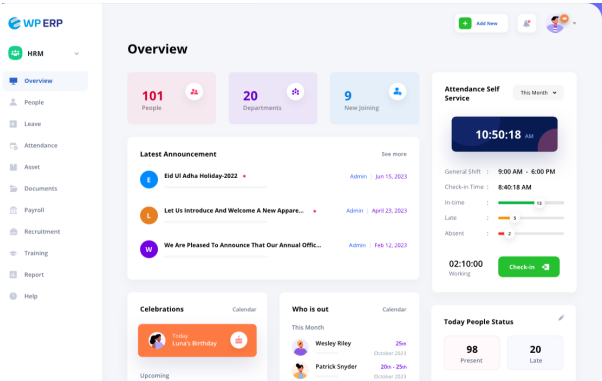
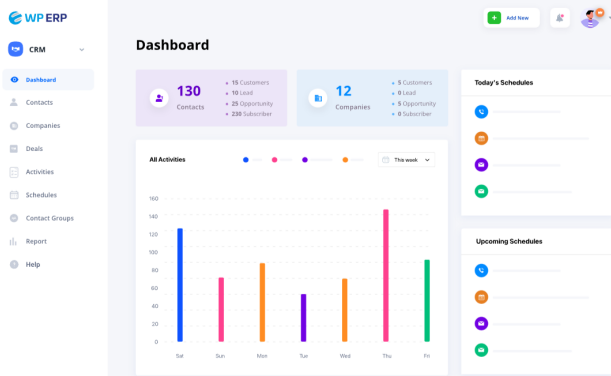
OVERVIEW	
PRODUCT NAME	WP ERP (WordPress ERP)
BUSINESS SECTORS	
DISTRIBUTION	✗
GOVERNMENT & NPO	✗
MANUFACTURING	✗
RETAIL	✓
SERVICES	✓
INDUSTRY	
AEROSPACE & DEFENSE	✗
AUTOMOTIVE	✗
CHEMICAL	✗
CONSTRUCTION	✗
COSMETICS	✗
ELECTRONICS	✗
ENERGY/POWER/UTILITIES	✗
ENGINEERING	✗
FASHION	✓
FINANCIAL SERVICES	✗
FOOD & BEVERAGE	✗
LOCAL GOVERNMENT	✗

MEDIA	✓
MEDICAL & HEALTHCARE	✗
METALWORKING	✗
OILFIELD	✗
PACKAGING	✗
PAINT & ADHESIVES	✗
PHARMACEUTICAL	✗
PLASTICS & RUBBER	✗
PRINT & DESIGN	✓
RENTAL	✗
TELECOMMUNICATIONS	✗
WOODWORKING	✗
CANNABIS	✗
EDUCATION	✓
NONPROFIT	✓
ERP SOFTWARE FEATURES	
BILLING	✓
BUSINESS INTELLIGENCE/ANALYTICS	✗
COSTING	✗
CRM	✓
CUSTOMER SERVICE	✗
PRODUCT DESIGN	✗
FINANCIALS & ACCOUNTING	✓
HR	✓
INVENTORY MANAGEMENT	✗

ORDER MANAGEMENT	✓
PLANNING & SCHEDULING	✗
PROJECT MANAGEMENT	✗
PURCHASING	✗
QUALITY CONTROL	✗
SALES	✗
SHIPPING & DISTRIBUTION	✗
SUPPLY CHAIN MANAGEMENT	✗
WAREHOUSE MANAGEMENT	✗
ASSET MANAGEMENT	✓
DOCUMENT MANAGEMENT	✗
CUSTOMER SUITABILITY	
ENTERPRISE (1000+ EMPLOYEES)	✗
MEDIUM SIZE (251-1000 EMPLOYEES)	✗
SMALL BUSINESS (1-250 EMPLOYEES)	✓
ADDITIONAL PRODUCT INFO	
MULTI LANGUAGE	✓
MULTI CURRENCY	✓
CUSTOMIZABLE	✓
SYSTEM HOSTING	
CLOUD	✓
INSTALLED ON PREMISE	✗
SUPPORT LOCATIONS	
AFRICA	✓
ANTARCTICA	✓

ASIA	✓
AUSTRALIA	✓
EUROPE	✓
NORTH AMERICA	✓
SOUTH AMERICA	✓
FURTHER INFORMATION	
PRICING	Free version available. WP ERP Pro starts at \$9.99/user/month. Additional modules range from \$2.49-\$9.49/month





Project Manager

**Accounting**

**Trial Balance**

Account Name	Debit Total	Credit Total
<b>Assets</b>		
Accounts Receivable (120)	\$0.00	\$51,210.00
Office Equipment (150)	\$86,000.00	\$0.00
Petty Cash (190)	\$0.00	\$143,308,107.75
Savings Account (080)	\$191,604,530.00	\$0.00
Transport (202)	\$11,760,000.00	\$0.00
Emergency fund (998)	\$100,000.00	\$0.00
<b>Liabilities</b>		
Accounts Payable (200)	\$0.00	\$10,162,430.00
<b>Expenses</b>		
Consulting & Accounting (015)	\$38,000.00	\$0.00
Utilities (040)	\$4,200.00	\$0.00
Printing & Stationery (052)	\$230.00	\$0.00
Rent (056)	\$50,000.00	\$0.00
Travel (080)	\$12,000.00	\$0.00
<b>Income</b>		
Sales (400)	\$0.00	\$10,050,123.00
Interest Income (460)	\$0.00	\$284.00
Other Revenue (470)	\$0.00	\$38,795.25
<b>Total</b>	<b>\$163,661,940.00</b>	<b>\$163,661,940.00</b>

Dashboard

General | Emails | HR | **Contact Forms** | CRM

**Gravity Forms**

**Contact Us**

Form Field	CRM Contact Option
Enter Email	Email
Full Name	First Name   Last Name   Company   Email
Date Of Birth	Phone   Mobile   Website   Fax   Street 1
Street 2	City   Country   State   Postal Code   Types
Notes	Other   Assign To   Group Id   Social - Facebook
	Social - Twitter   Social - Googleplus   Social - LinkedIn
Full Name	Full Name
Confirm Email	Not Set

Contact Group: Gravity Customers

Reset | **Save Changes**

**My Gravity Form**