



# WORKDAY ERP EXTENDED PROFILE



## OVERVIEW

Workday ERP is an AI-powered, cloud-based enterprise management platform built around finance, HR, planning, and analytics.

It is best known for combining [human capital management](#) and financial management in a single data model, giving teams a shared view of workforce and business performance.

Workday's ERP offering is an alternative to traditional, module-heavy systems featuring real-time reporting, automation, and a consistent user experience across finance and people operations. It's best suited to organisations that want to reduce manual work, improve visibility across departments, and support growth without relying on on-premise infrastructure.

## CORE CAPABILITIES:

- Core HR and employee records
- Talent management, onboarding, and performance workflows
- Payroll, time tracking, and benefits administration
- Financial management: General ledger, accounts payable, and expense handling]
- AI-assisted planning, budgeting, forecasting, and analytics

A notable strength is its unified data model, which helps finance and HR teams work from a single source of truth rather than reconciling disconnected systems. That structure also supports cross-functional reporting and faster decision-making.

Many buyers first adopt Workday for HCM and then expand into finance and planning



## SOFTWARE SPECIFICATION

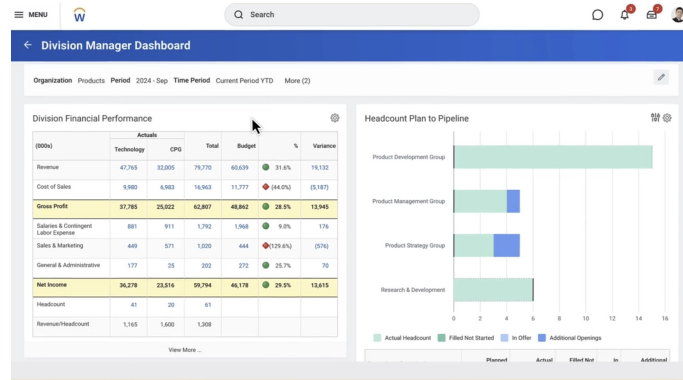
<b>OVERVIEW</b>	
<b>PRODUCT NAME</b>	Workday ERP
<b>BUSINESS SECTORS</b>	
<b>DISTRIBUTION</b>	✗
<b>GOVERNMENT &amp; NPO</b>	✗
<b>MANUFACTURING</b>	✓
<b>RETAIL</b>	✓
<b>SERVICES</b>	✓
<b>INDUSTRY</b>	
<b>AEROSPACE &amp; DEFENSE</b>	✗
<b>AUTOMOTIVE</b>	✗
<b>CHEMICAL</b>	✗
<b>CONSTRUCTION</b>	✗
<b>COSMETICS</b>	✗
<b>ELECTRONICS</b>	✗
<b>ENERGY/POWER/UTILITIES</b>	✗
<b>ENGINEERING</b>	✗
<b>FASHION</b>	✗
<b>FINANCIAL SERVICES</b>	✓
<b>FOOD &amp; BEVERAGE</b>	✗


LOCAL GOVERNMENT	✓
MEDIA	✗
MEDICAL & HEALTHCARE	✓
METALWORKING	✗
OILFIELD	✗
PACKAGING	✗
PAINT & ADHESIVES	✗
PHARMACEUTICAL	✗
PLASTICS & RUBBER	✗
PRINT & DESIGN	✗
RENTAL	✗
TELECOMMUNICATIONS	✗
WOODWORKING	✗
CANNABIS	✗
EDUCATION	✓
NONPROFIT	✗
<b>ERP SOFTWARE FEATURES</b>	
BILLING	✗
BUSINESS INTELLIGENCE/ANALYTICS	✓
COSTING	✗
CRM	✗
CUSTOMER SERVICE	✗
PRODUCT DESIGN	✗
FINANCIALS & ACCOUNTING	✓
HR	✓

INVENTORY MANAGEMENT	✓
ORDER MANAGEMENT	✗
PLANNING & SCHEDULING	✓
PROJECT MANAGEMENT	✓
PURCHASING	✓
QUALITY CONTROL	✗
SALES	✗
SHIPPING & DISTRIBUTION	✗
SUPPLY CHAIN MANAGEMENT	✗
WAREHOUSE MANAGEMENT	✗
ASSET MANAGEMENT	✗
DOCUMENT MANAGEMENT	✓
<b>CUSTOMER SUITABILITY</b>	
ENTERPRISE (1000+ EMPLOYEES)	✓
MEDIUM SIZE (251-1000 EMPLOYEES)	✓
SMALL BUSINESS (1-250 EMPLOYEES)	✓
<b>ADDITIONAL PRODUCT INFO</b>	
MULTI LANGUAGE	✗
MULTI CURRENCY	✗
CUSTOMIZABLE	✓
<b>SYSTEM HOSTING</b>	
CLOUD	✓
INSTALLED ON PREMISE	✗
<b>FURTHER INFORMATION</b>	




**SOFTWARE SCREENSHOTS**






**BP Optimize Agent**

Streamline Workday business processes in minutes with AI-powered recommendations.



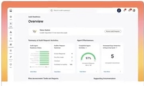
**Contingent Sourcing Agent**

Accelerate sourcing and reduce costs by proactively finding top contingent talent.



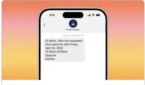
**Document Driven Accounting Agent**

Reduce time and cost to account for agreements, increasing accuracy and compliance.




**Financial Audit Agent**

Increase efficiency and mitigate risk during the audit experience.




**Frontline Agent**

Automate experiences and




**Payroll Agent**

Reduce manual payroll tasks



**Self Service Agent**



**Supplier Contracts Agent**