



EFACS E/8

EXTENDED PROFILE



OVERVIEW

EFACS E/8, from Exel Computer Systems, is an ERP system with a component structure, this allows the system to be customized to the requirements of the company.

The ERP can be applied to several manufacturing methodologies, including engineered-to-order, assemble-to-order, and made-to-stock.

EFACS E/8 is split into 6 components; product definition, material management, planning, CRM, aftermarket, and accounts. Each component is responsible for streamlining a different company process, each one can communicate directly with other EFACS E/8 components and third party systems via industry standard protocols.

Users of EFACS E/8 ERP will benefit from system-wide features such as document management, multi-language, and currency capabilities as well as a touchscreen interface and process automation.

EFACS E/8 can be hosted on cloud servers or at the user's premises, the system is browser based and so can be accessed via any desktop or via Android and iOS apps.



SOFTWARE SPECIFICATION

OVERVIEW	
PRODUCT NAME	EFACS E/8
BUSINESS SECTORS	
DISTRIBUTION	✓
GOVERNMENT & NPO	✗
MANUFACTURING	✓
RETAIL	✗
SERVICES	✓
INDUSTRY	
AEROSPACE & DEFENSE	✓
AUTOMOTIVE	✓
CHEMICAL	✓
CONSTRUCTION	✓
COSMETICS	✓
ELECTRONICS	✓
	✓

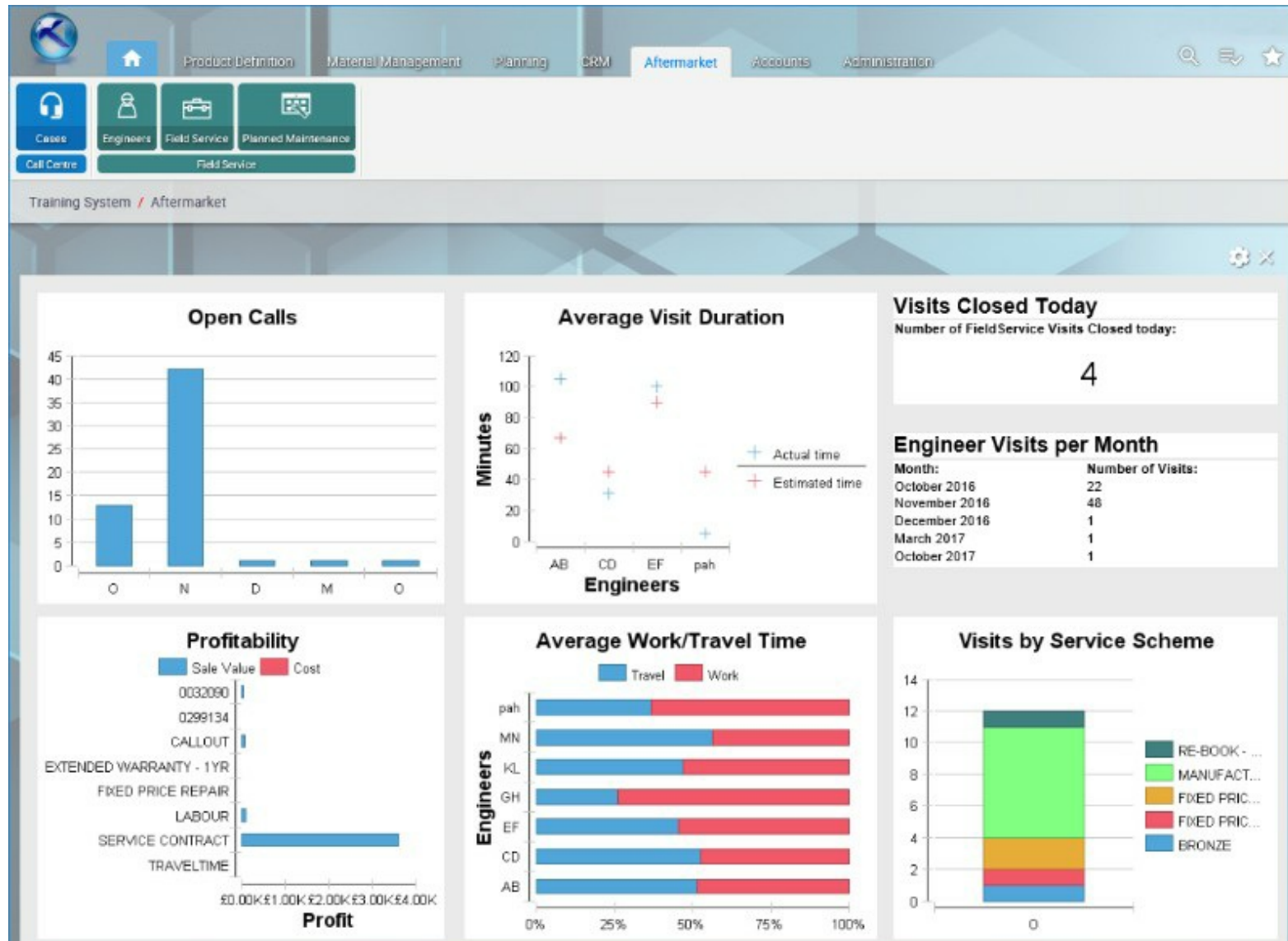
ENERGY/POWER/UTILITIES	
ENGINEERING	✓
FASHION	✗
FINANCIAL SERVICES	✗
FOOD & BEVERAGE	✓
LOCAL GOVERNMENT	✗
MEDIA	✗
MEDICAL & HEALTHCARE	✓
METALWORKING	✓
OILFIELD	✓
PACKAGING	✓
PAINT & ADHESIVES	✓
PHARMACEUTICAL	✓
PLASTICS & RUBBER	✓
PRINT & DESIGN	✓
RENTAL	✗
TELECOMMUNICATIONS	✓
WOODWORKING	✓
CANNABIS	✗
EDUCATION	✗
NONPROFIT	✗

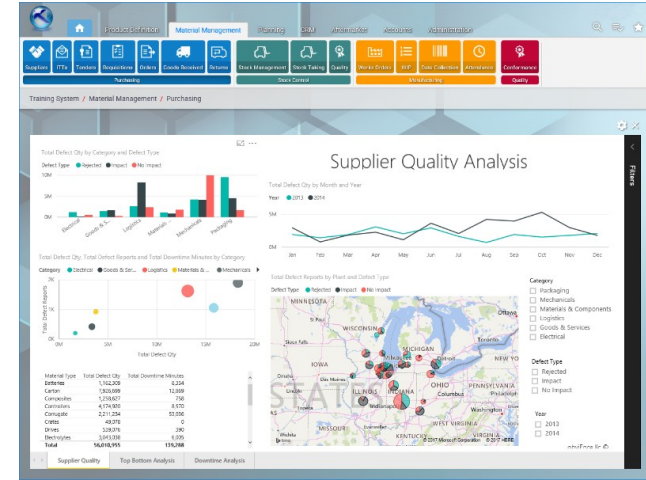
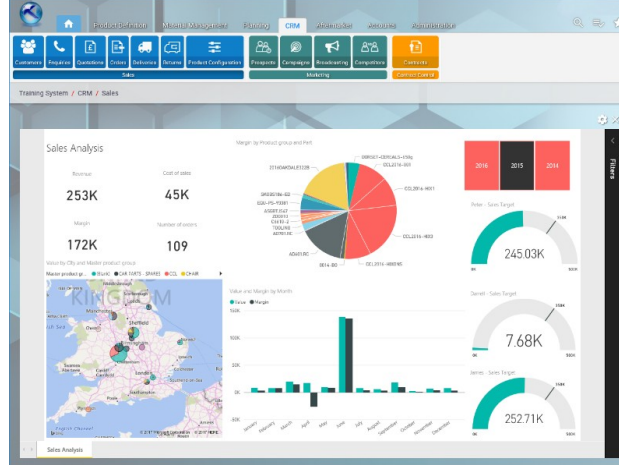
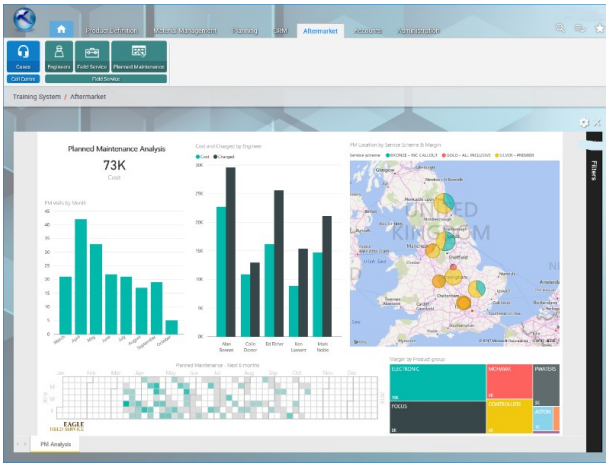
ERP SOFTWARE FEATURES	
BILLING	✓
BUSINESS INTELLIGENCE/ANALYTICS	✓
COSTING	✓
CRM	✓
CUSTOMER SERVICE	✓
PRODUCT DESIGN	✓
FINANCIALS & ACCOUNTING	✓
HR	✗
INVENTORY MANAGEMENT	✓
ORDER MANAGEMENT	✓
PLANNING & SCHEDULING	✓
PROJECT MANAGEMENT	✓
PURCHASING	✓
QUALITY CONTROL	✓
SALES	✓
SHIPPING & DISTRIBUTION	✓
SUPPLY CHAIN MANAGEMENT	✓
WAREHOUSE MANAGEMENT	✓
ASSET MANAGEMENT	✓

DOCUMENT MANAGEMENT	✓
CUSTOMER SUITABILITY	
ENTERPRISE (1000+ EMPLOYEES)	✓
MEDIUM SIZE (251-1000 EMPLOYEES)	✓
SMALL BUSINESS (1-250 EMPLOYEES)	✓
ADDITIONAL PRODUCT INFO	
MULTI LANGUAGE	✓
MULTI CURRENCY	✓
CUSTOMIZABLE	✓
SYSTEM HOSTING	
CLOUD	✓
INSTALLED ON PREMISE	✓
FURTHER INFORMATION	
PRICING	Pricing not available
IMPLEMENTATION TIMEFRAME	3 months



SOFTWARE SCREENSHOTS





Customers

Name	Address	Phone	Category	Status	Created	
AKXT001	AKXBIATC TECHNOLOG	ACTIVE	5 PLASTICS	CATEGORYA	DM	20 October 20...
BO01	B-HIGH-BRIERMAN	ACTIVE	5 LUMBS	CATEGORYC	DM	15 October 20...
CENTR001	CENTRA PLASTICS	ACTIVE	5 PLASTICS	CATEGORYB	JL	15 October 20...
CRK01	CX ELECTRICAL INSTAL	ACTIVE	5 GENENG	CATEGORYC	FG	20 October 20...
CONTR001	CONTRACT CONTRACTORS	ACTIVE	5 CAPITAL	CATEGORYA	FG	20 September 20...
CORR002	CORRIBRIS FOR LUBA	ACTIVE	5 CAPITAL	CATEGORYA	FG	20 September 20...
CUS01	CU METALLATIONS AND	ACTIVE	5 GENENG	CATEGORYC	FG	10 October 20...
GEMANP01	JEMWELD FABRICATIO...	ACTIVE	5 AERO	CATEGORYC	DM	21 October 20...
HOME001	HOMELD ENGINEERING	ACTIVE	5 GENENG	CATEGORYA	DM	06 November 20...
IR01	J AEROSPACE BLDG	ACTIVE	5 AERO	CATEGORYC	HD	19 November 20...
NOKTE001	NORTHAMBRAN TOOLA	ACTIVE	5 GENENG	CATEGORYC	HD	09 November 20...
POWER001	POWERBLAY SYSTEMS	ACTIVE	5 AERO	CATEGORYA	DM	11 November 20...
ROBT	ROBSON JONES SC A	ACTIVE	5 SELECT	CATEGORYC	DM	11 November 20...
ROE2	ROBSON PUMPS LTD	ACTIVE	5 GENENG	CATEGORYA	FG	DM
ROE201	ROE'S ENGINEERING	ACTIVE	5 AERO	CATEGORYA	DM	31 October 20...
SE02	STEWART ENGINEERING	ACTIVE	5 GENENG	CATEGORYC	DM	DM
SIB001	SIBBERS ENGINEERING	ACTIVE	5 GENENG	CATEGORYA	DM	09 October 20...
SMBR	SMBR ENGINEERING L	ACTIVE	5 AERO	CATEGORYC	DM	DM
TOM001	TOM MANUFACTURING	ACTIVE	5 GENENG	CATEGORYA	DM	DM
WPT	WPT ENGINEERING SER	ACTIVE	5 ENOK	CATEGORYC	FG	DM
WPT001	WPT ENGINEERING SER	ACTIVE	5 AERO	CATEGORYA	DM	DM
TURN001	TURNBULL ENGINEERS	ACTIVE	5 GENENG	CATEGORYC	FG	DM
TURN001	TURNBULL ENGINEERS	ACTIVE	5 GENENG	CATEGORYC	DM	19 October 20...

Parts

Part number: AD501.BC | Description: 125 RICH CLUTCH PLATE ASSEMBLY

Category	Actual costs	Current costs	Going to costs	Standard costs
Supplier	£ 0.0000 GBP	£ 0.4810 GBP	£ 0.5052 GBP	£ 0.6474 GBP
Operator	£ 0.0000 GBP	£ 14.9811 GBP	£ 33.7760 GBP	£ 29.9192 GBP
Subcontract	£ 0.0000 GBP	£ 32.5200 GBP	£ 16.7200 GBP	£ 16.7200 GBP
Plant overhead	£ 0.0000 GBP	£ 3.5917 GBP	£ 4.8957 GBP	£ 4.8957 GBP
Variable overhead	£ 0.0000 GBP	£ 3.4966 GBP	£ 11.7260 GBP	£ 10.3974 GBP
Landed cost	£ 0.0000 GBP	£ 0.9088 GBP	£ 0.9088 GBP	£ 0.9088 GBP
Unit	£ 0.0000 GBP	£ 0.9088 GBP	£ 0.9088 GBP	£ 0.9088 GBP

Scheduler

Calendar: May 2017

Work center	Operation	Per Unit	Shop Floor	Parent work center	Status	Quantity	Quantity good	Quantity scrapped	Quantity remaining	Earliest date	Latest date
880 - POLISHER	880 - POLISHER	1.0000	1.0000	880 - POLISHER	N	0.0000	0.0000	0.0000	0.0000	05/05/2017	05/05/2017
GENERAL - GENERAL BNC CENTRE	GENERAL - GENERAL BNC CENTRE	1.0000	1.0000	GENERAL - GENERAL BNC CENTRE	N	0.0000	0.0000	0.0000	0.0000	05/05/2017	05/05/2017
KAMAZI JIB INDUSTRIAL MILLER	KAMAZI JIB INDUSTRIAL MILLER	1.0000	1.0000	KAMAZI JIB INDUSTRIAL MILLER	N	0.0000	0.0000	0.0000	0.0000	05/05/2017	05/05/2017
GENERAL - GENERAL BNC CENTRE	GENERAL - GENERAL BNC CENTRE	1.0000	1.0000	GENERAL - GENERAL BNC CENTRE	N	0.0000	0.0000	0.0000	0.0000	05/05/2017	05/05/2017
GENERAL - GENERAL BNC CENTRE	GENERAL - GENERAL BNC CENTRE	1.0000	1.0000	GENERAL - GENERAL BNC CENTRE	N	0.0000	0.0000	0.0000	0.0000	05/05/2017	05/05/2017