



EXPANDABLE ERP

EXTENDED PROFILE



OVERVIEW

Expandable Software is an ERP aimed specifically at growing manufacturers, offering a platform which can be adapted to the position of a business in its growth cycle. It is available in the cloud as a SaaS or as an on-site deployment.

The Expandable ERP suite is built on the Microsoft SQL platform for maximum flexibility. Users can benefit from a comprehensive range of features, ranging from 'core' functionalities like accounting and finance, reporting and manufacturing management, to extended productivity tools and a CRM module. There is an option to integrate Expandable ERP with Salesforce.

The SaaS model allows you to expand on demand. With a monthly subscription fee, you can purchase the basic services of Expandable ERP without a major upfront commitment. This can then be added to as you grow as an organization, both in terms of features and number of users.

The software is available wherever there is an internet connection, and there are native iOS and Android apps for use on mobile devices. Implementation of Expandable ERP takes eight to twelve weeks. Training and implementation support are available and only carried out by Expandable personnel.



SOFTWARE SPECIFICATION

OVERVIEW	
PRODUCT NAME	Expandable ERP
BUSINESS SECTORS	
DISTRIBUTION	✗
GOVERNMENT & NPO	✗
MANUFACTURING	✓
RETAIL	✗
SERVICES	✗
INDUSTRY	
AEROSPACE & DEFENSE	✗
AUTOMOTIVE	✗
CHEMICAL	✗
CONSTRUCTION	✗
COSMETICS	✗
ELECTRONICS	✓
ENERGY/POWER/UTILITIES	✓
	✗

ENGINEERING	
FASHION	✗
FINANCIAL SERVICES	✗
FOOD & BEVERAGE	✗
LOCAL GOVERNMENT	✗
MEDIA	✗
MEDICAL & HEALTHCARE	✓
METALWORKING	✗
OILFIELD	✗
PACKAGING	✗
PAINT & ADHESIVES	✗
PHARMACEUTICAL	✗
PLASTICS & RUBBER	✗
PRINT & DESIGN	✗
RENTAL	✗
TELECOMMUNICATIONS	✓
WOODWORKING	✗
CANNABIS	✗
EDUCATION	✗
NONPROFIT	✗

ERP SOFTWARE FEATURES	
BILLING	✓
BUSINESS INTELLIGENCE/ANALYTICS	✓
COSTING	✓
CRM	✓
CUSTOMER SERVICE	✓
PRODUCT DESIGN	✓
FINANCIALS & ACCOUNTING	✓
HR	✗
INVENTORY MANAGEMENT	✓
ORDER MANAGEMENT	✓
PLANNING & SCHEDULING	✓
PROJECT MANAGEMENT	✓
PURCHASING	✓
QUALITY CONTROL	✓
SALES	✓
SHIPPING & DISTRIBUTION	✓
SUPPLY CHAIN MANAGEMENT	✓
WAREHOUSE MANAGEMENT	✓
ASSET MANAGEMENT	✓
	✓

DOCUMENT MANAGEMENT	
CUSTOMER SUITABILITY	
ENTERPRISE (1000+ EMPLOYEES)	✗
MEDIUM SIZE (251-1000 EMPLOYEES)	✓
SMALL BUSINESS (1-250 EMPLOYEES)	✓
ADDITIONAL PRODUCT INFO	
MULTI LANGUAGE	✓
MULTI CURRENCY	✓
CUSTOMIZABLE	✓
SYSTEM HOSTING	
CLOUD	✓
INSTALLED ON PREMISE	✓
FURTHER INFORMATION	
IMPLEMENTATION TIMEFRAME	8-12 weeks
PRICING	\$250 per month

SOFTWARE SCREENSHOTS

Bill of Material Viewer: PDEBMV

Exec BOM Search | Preview Tools | Exec Inquiry | Navigation (Prior, First, Last, Next) | Window Snapshot

Assembly ID: 649N
 Description: Jack, Hydraulic Floor Roller
 Effective Date: 4/3/2013
 Bills Type: EP - Both Eng & Production
 Single Level: Include Standard Costs:

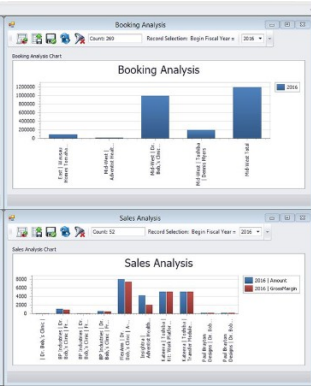
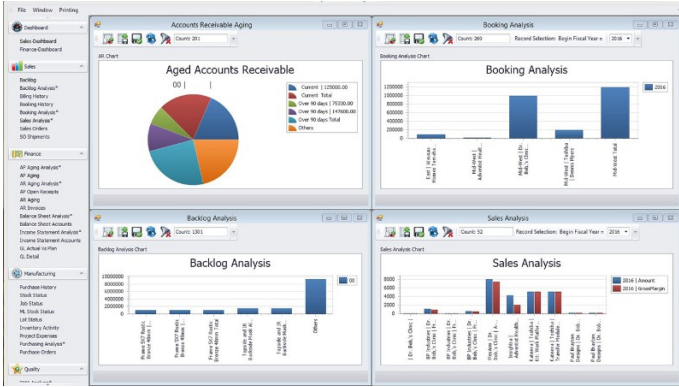
Part ID: 649%
 Search Name:
 Part Type:
 Part Status:

Part ID	Description
649-0213	Spindle, Lifting Arm Bar Stock
649-7205	Pin, Pivot
649-7208	Lifting Arm Assembly
649-7213	Spindle, Lifting Arm
649-7215	Bushing
649E-BLACK	Black Hydraulic Floor Jack
649E-GREEN	Green Hydraulic Floor Jack
649E-RED	Red Hydraulic Floor Jack
649E-WHITE	White Hydraulic Floor Jack
649N	Jack, Hydraulic Floor Roller
649N-CWA	Assembly, Caster Wheel
649N-FWA	Assembly, Front Wheel
649N-MIL	Jack, Hydraulic Floor Roller *Military*
649N-MWA	Assembly, Middle Wheel
649N-PLAN	Plan Parent for the Colored Jack Family
649N-SCALE	Jack, Hydraulic 2 Ton with Scale

649N -- Jack, Hydraulic Floor Roller

- 646-3702 -- EA., Frame, Base Chassis -- Req Qty: 1.000000
- 646-7202 -- EA., Cover Plate -- Req Qty: 1.000000
 - 646-7202M -- IN., Steel, Plate 1/16 Inch -- Req Qty: 8.00000
- 646-7214 -- EA., Spacer, Tube -- Req Qty: 1.000000
- 646-7215 -- EA., Bolt, Anchor -- Req Qty: 1.000000
- 646-7219 -- EA., Saddle -- Req Qty: 1.000000
- 646-7223 -- EA., Ring, Retaining -- Req Qty: 1.000000
- 646-7225 -- EA., Ring, Retaining -- Req Qty: 1.000000
- 646-7227 -- EA., Washer, Flat -- Req Qty: 2.000000
- 646-7228 -- EA., Ring, Retaining -- Req Qty: 2.000000
- 646-7241 -- EA., Washer, Flat -- Req Qty: 1.000000
- 649-7205 -- EA., Pin, Pivot -- Req Qty: 2.000000
- 649-7208 -- EA., Lifting Arm Assembly -- Req Qty: 3.000000
 - 649-0213 -- IN., Spindle, Lifting Arm Bar Stock -- Req Qty: 3.000000
 - 649-7213 -- EA., Spindle, Lifting Arm -- Req Qty: 1.000000
- 649N-CWA -- EA., Assembly, Caster Wheel -- Req Qty: 2.000000
 - 646-7215 -- EA., Bolt, Anchor -- Req Qty: 1.000000
 - 646-7236 -- EA., Wheel, Caster -- Req Qty: 1.000000

30 Components.



Form Flow Designer

Check Detail: 275 Amount: 5064.80 USD HNR001 Item: Bio Products

Appr. Type	Customer ID	Invoice/Order Number	Applied Amount	Credit Amount

Check Balance: 5064.80 USD

Invoice Number	Customer ID	Invoice Date	Current Balance	Currency Code	Terms Code	Due Date	Next Payment Date	Invoice Type/Next Payment Amnt
124 HNR001		5/1/2016	2754.80 USD		30	5/3/2016	5/3/2016	SI
125 HNR001		5/19/2016	2289.00 USD		30	6/18/2016	6/18/2016	SI

Parts Master Editor: ICEPM - Edit

Part ID: 649N-ES0123 Part UM: 24 Part Status: A - Active

Description: Expandable - Jack, Hydraulic Floor Roller, 2 Ton Search Name: JACK, HYDRAULIC

AL Part Description: Jack, plancher hydraulique rouleau, 2 tonne Part Type: B - Buy

Part Class: FG - Finished Good Category Code: U - Unique

Substitute Part: 649N-WHITE Pending ECN: []

ECN: 4256 ECN Eff Date: 1/1/2013 Drawing Size: A

Drawing Revision: A Date Created: 8/15/2012 10:30:07 AM

Original Release Date: 4/3/2013 Date Obsolete: []

Date Active: 4/3/2013 Hold Code: []

Date Inactive: [] Date Last Update: 4/3/2013