



APPARELMAGIC

EXTENDED PROFILE



OVERVIEW

ApparelMagic is an apparel software built for the fashion industry. With ERP, PLM, Accounting, and world class training and support, ApparelMagic is powerful enough to handle the PLM/ERP side for some of the biggest brands in fashion, but intuitive and affordable enough that a small business can get their team started in just minutes.

SOFTWARE SPECIFICATION

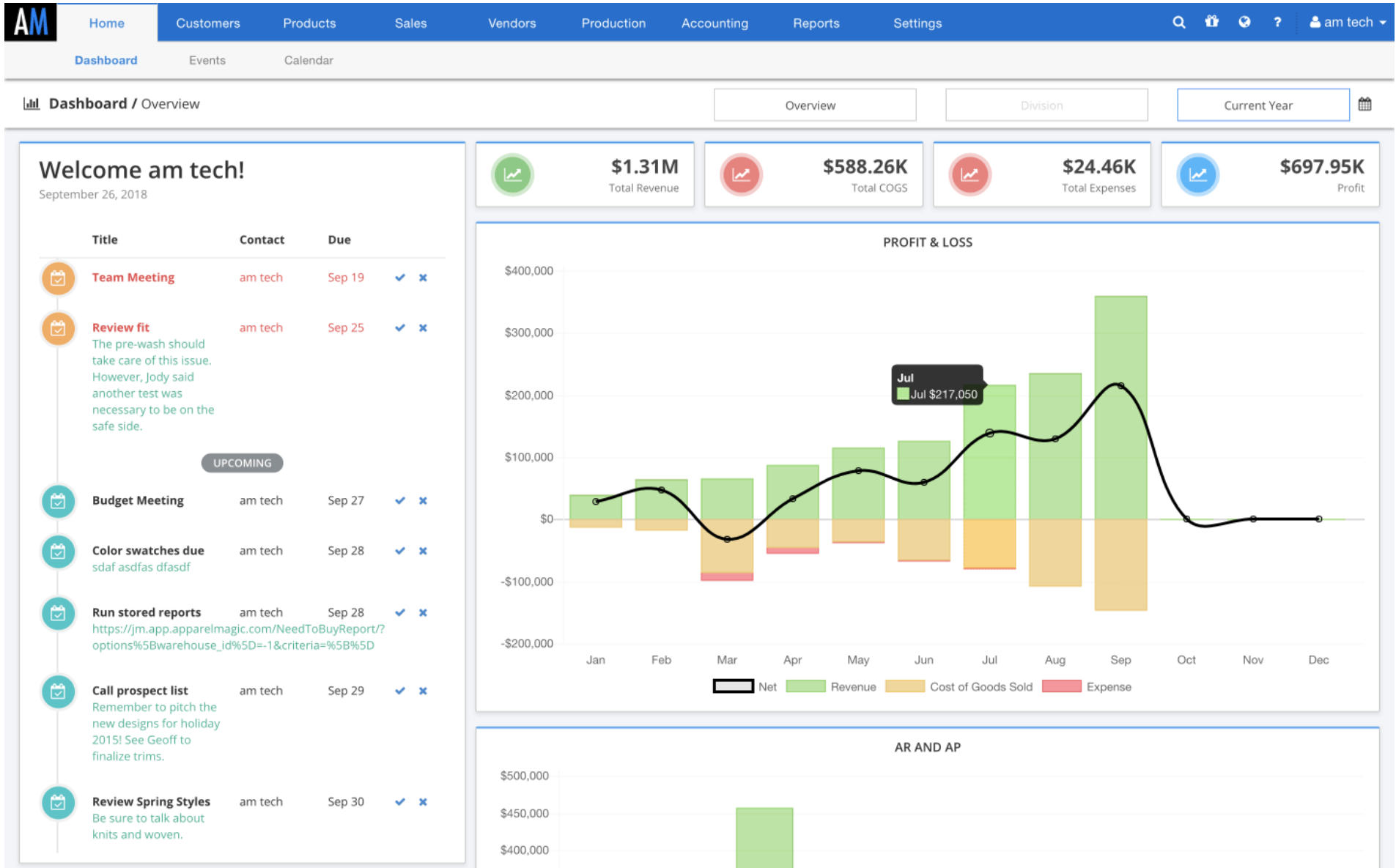
OVERVIEW	
PRODUCT NAME	ApparelMagic
BUSINESS SECTORS	
DISTRIBUTION	✗
GOVERNMENT & NPO	✗
MANUFACTURING	✓
RETAIL	✓
SERVICES	✗
INDUSTRY	
AEROSPACE & DEFENSE	✗
AUTOMOTIVE	✗
CHEMICAL	✗
CONSTRUCTION	✗
COSMETICS	✗
ELECTRONICS	✗
ENERGY/POWER/UTILITIES	✗
	✗

ENGINEERING	
FASHION	✓
FINANCIAL SERVICES	✗
FOOD & BEVERAGE	✗
LOCAL GOVERNMENT	✗
MEDIA	✗
MEDICAL & HEALTHCARE	✗
METALWORKING	✗
OILFIELD	✗
PACKAGING	✗
PAINT & ADHESIVES	✗
PHARMACEUTICAL	✗
PLASTICS & RUBBER	✗
PRINT & DESIGN	✗
RENTAL	✗
TELECOMMUNICATIONS	✗
WOODWORKING	✗
CANNABIS	✗
EDUCATION	✗
NONPROFIT	✗
ERP SOFTWARE FEATURES	

BILLING	✓
BUSINESS INTELLIGENCE/ANALYTICS	✓
COSTING	✓
CRM	✓
CUSTOMER SERVICE	✗
PRODUCT DESIGN	✓
FINANCIALS & ACCOUNTING	✓
HR	✗
INVENTORY MANAGEMENT	✓
ORDER MANAGEMENT	✓
PLANNING & SCHEDULING	✓
PROJECT MANAGEMENT	✓
PURCHASING	✓
QUALITY CONTROL	✓
SALES	✓
SHIPPING & DISTRIBUTION	✓
SUPPLY CHAIN MANAGEMENT	✓
WAREHOUSE MANAGEMENT	✓
ASSET MANAGEMENT	✗
	✓

DOCUMENT MANAGEMENT	
CUSTOMER SUITABILITY	
ENTERPRISE (1000+ EMPLOYEES)	✓
MEDIUM SIZE (251-1000 EMPLOYEES)	✓
SMALL BUSINESS (1-250 EMPLOYEES)	✓
ADDITIONAL PRODUCT INFO	
MULTI LANGUAGE	✓
MULTI CURRENCY	✓
CUSTOMIZABLE	✓
SYSTEM HOSTING	
CLOUD	✓
INSTALLED ON PREMISE	✗
FURTHER INFORMATION	
PRICING	From \$80 per month paid annually
IMPLEMENTATION TIMEFRAME	1 week

SOFTWARE SCREENSHOTS



AM Home Customers Products Sales Vendors Production Accounting Reports Settings Deployment Q 🔍 📄 🔽 john

Customers Products Inventory Sales Production Accounting

Time Staged Availability

Parameters: All Records

Show All Show Hide Favorites

Show By: Date Due
Date Due: 12/31/2017

Style

Category

- Accessories
- Dresses
- Jackets
- Pants
- Shirts

Collection

- Casual
- Earth City
- Fashion Forward
- Floral
- Home

Availability

- Show Available to Sell
- Show In Stock

Season

Vendor

- None
- Fully Outsourced
- Self Mfgd
- Mixed Sourcing

Style	Color	Other	Date Due	S	M	T	W	T	F	S	S	M	T	F	S	M	T	F
DR530	BLK	Inventory	2,560	2,560	2,560	2,560	2,560	2,560	2,560	2,560	2,560	2,560	2,560	2,560	2,560	2,560	2,560	2,560
DR530	BLK	Availability																
DR530	BLU	Inventory	2,490	2,013	2,013	2,013	2,013	2,013	2,013	2,013	2,013	2,013	2,013	2,013	2,013	2,013	2,013	2,013
DR530	BLU	Availability																
DR530	BLU	Inventory	1,514	1,282	1,281	1,281	1,281	1,281	1,281	1,281	1,281	1,281	1,281	1,281	1,281	1,281	1,281	1,281
DR530	BLU	Availability																
DR530	BLU	Inventory	2,812															
DR530	BLU	Availability	2,812	1,244	1,243	1,243	1,243	1,243	1,243	1,243	1,243	1,243	1,243	1,243	1,243	1,243	1,243	1,243
DR530	BLU	Inventory	3,000	3,000	3,000	3,000	3,000	3,000	3,000	3,000	3,000	3,000	3,000	3,000	3,000	3,000	3,000	3,000
DR530	BLU	Availability																
DR530	BNV	Inventory	3,000	3,000	3,000	3,000	3,000	3,000	3,000	3,000	3,000	3,000	3,000	3,000	3,000	3,000	3,000	3,000
DR530	BNV	Availability																
DR530	HTF	Inventory	3,000	3,000	3,000	3,000	3,000	3,000	3,000	3,000	3,000	3,000	3,000	3,000	3,000	3,000	3,000	3,000
DR530	HTF	Availability																
DR530	HTF	Inventory	3,010	3,010	3,010	3,010	3,010	3,010	3,010	3,010	3,010	3,010	3,010	3,010	3,010	3,010	3,010	3,010
DR530	HTF	Availability																
DR530	HTF	Inventory	3,010	3,010	3,010	3,010	3,010	3,010	3,010	3,010	3,010	3,010	3,010	3,010	3,010	3,010	3,010	3,010
DR530	HTF	Availability																
DR530	RED	Inventory	3,000	3,000	3,000	3,000	3,000	3,000	3,000	3,000	3,000	3,000	3,000	3,000	3,000	3,000	3,000	3,000
DR530	RED	Availability																
DR530	RED	Inventory	3,000	3,000	3,000	3,000	3,000	3,000	3,000	3,000	3,000	3,000	3,000	3,000	3,000	3,000	3,000	3,000
DR530	RED	Availability																
FALL 2017			295	35	S	M	L	M	295									
FALL 2017	WDF	Inventory	300	300	300	300	300	300	300	300	300	300	300	300	300	300	300	300
FALL 2017	WDF	Availability																
FALL 2017	WDF	Inventory	300	300	300	300	300	300	300	300	300	300	300	300	300	300	300	300
FALL 2017	WDF	Availability																
FALL 2017	WDF	Inventory	310	310	310	310	310	310	310	310	310	310	310	310	310	310	310	310
FALL 2017	WDF	Availability																
FALL 2017	WDF	Inventory	320	315	300	300	300	315	310									
FALL 2017	WDF	Availability																
JANU	BLK	Inventory	2,700	2,624	2,624	2,624	2,624	2,624	2,624	2,624	2,624	2,624	2,624	2,624	2,624	2,624	2,624	2,624
JANU	BLK	Availability																
JANU	BLK	Inventory	2,836															
JANU	BLK	Availability																
JANU	BLK	Inventory	2,836	2,670	2,670	2,670	2,670	2,670	2,670	2,670	2,670	2,670	2,670	2,670	2,670	2,670	2,670	2,670
JANU	BLK	Availability																

[Add Filters](#) [Print](#) [Export](#) [Copy Link](#) [Run](#) [Close](#)

AM Home Customers Products Sales Vendors Production Accounting Reports Settings Deployment Q 🔍 📄 🔽 john

Bikes Materials Inventory Maintenance

DR54291

999.00 0 9,009.00 50.00

Matrix Activity Processes BOM BOM Detail Cost/ Price Specs Inventory Prepacks E-Commerce Files

Price Color All On All Off

SKU Blue

SKU Green

SKU Purple

SKU White

Style Number: DR54291
Description: LS Dress
Collection: Women's Apparel
Changes: Dress

Product
Material
Track Inventory
Taxable

Price Break
Buyer Price

[Add Filters](#) [Print](#) [Export](#) [Copy Link](#) [Schedule](#) [Run](#) [Close](#)

AM Home Customers Products Sales Vendors Production Accounting Reports Settings Deployment Q 🔍 📄 🔽 john

General Customers Products Inventory Sales Production Accounting

Product Catalog

Parameters: Collection - Women's Apparel, Season - Spring 2019

Category

- Accessories
- Dress
- Pants
- Outerwear
- T-shirt
- Home

Collection

- Men's Apparel
- Pants
- Women's Apparel

Availability

- Show Available to Sell
- Show In Stock

Season

- Spring 2019

Vendor

- Access the Prod Imports
- Agent Distribution
- Full Price Cost
- Design Imports
- Discount Import Source
- None

[Add Filters](#) [Print](#) [Export](#) [Copy Link](#) [Schedule](#) [Run](#) [Close](#)

Product Catalog

Parameters: Collection - Women's Apparel, Season - Spring 2019

AC0943 Cottonwear Top \$24.00	DR54291 Cotton Blend Dress \$99.00	DR54291 LS Dress \$99.00	DR54291 Sleeved Dress \$78.00	DR54291 Cotton Blend Top \$148.00
DR54291 Cotton Blend Top \$24.00	DR54291 Cotton Blend Dress \$99.00	DR54291 LS Dress \$99.00	DR54291 Sleeved Dress \$78.00	DR54291 Cotton Blend Top \$148.00
DR54291 Cotton Blend Top \$24.00	DR54291 Cotton Blend Dress \$99.00	DR54291 LS Dress \$99.00	DR54291 Sleeved Dress \$78.00	DR54291 Cotton Blend Top \$148.00
DR54291 Cotton Blend Top \$24.00	DR54291 Cotton Blend Dress \$99.00	DR54291 LS Dress \$99.00	DR54291 Sleeved Dress \$78.00	DR54291 Cotton Blend Top \$148.00

[Add Filters](#) [Print](#) [Export](#) [Copy Link](#) [Schedule](#) [Run](#) [Close](#)