



GENIUS ERP

EXTENDED PROFILE



OVERVIEW

Genius Solutions is a complete enterprise resource planning (ERP) solution built for small to mid-sized custom manufacturers handling make-to-order, engineer-to-order, custom-to-order and assemble-to-order manufacturing.

Genius ERP provides custom manufacturers with the tools they need to reduce costs, increase productivity, and improve the performance of production sites, including CRM, inventory management, product engineering, job costing, account management, scheduling, production planning, and accounting. Automate time-consuming steps, estimate with greater accuracy, reduce bottlenecks on the shop floor, and connect historical data to upcoming runs to optimize production.

Genius ERP was designed specifically for custom manufacturers by industry experts. From design to delivery, Genius ERP helps manufacturers achieve increased throughput without hiring new staff or expanding operations. Manufacturers can handle more jobs and take on new customers while avoiding bottlenecks, stalled projects, and supply overstock.

Genius ERP: one system that helps simplify complex manufacturing.



SOFTWARE SPECIFICATION

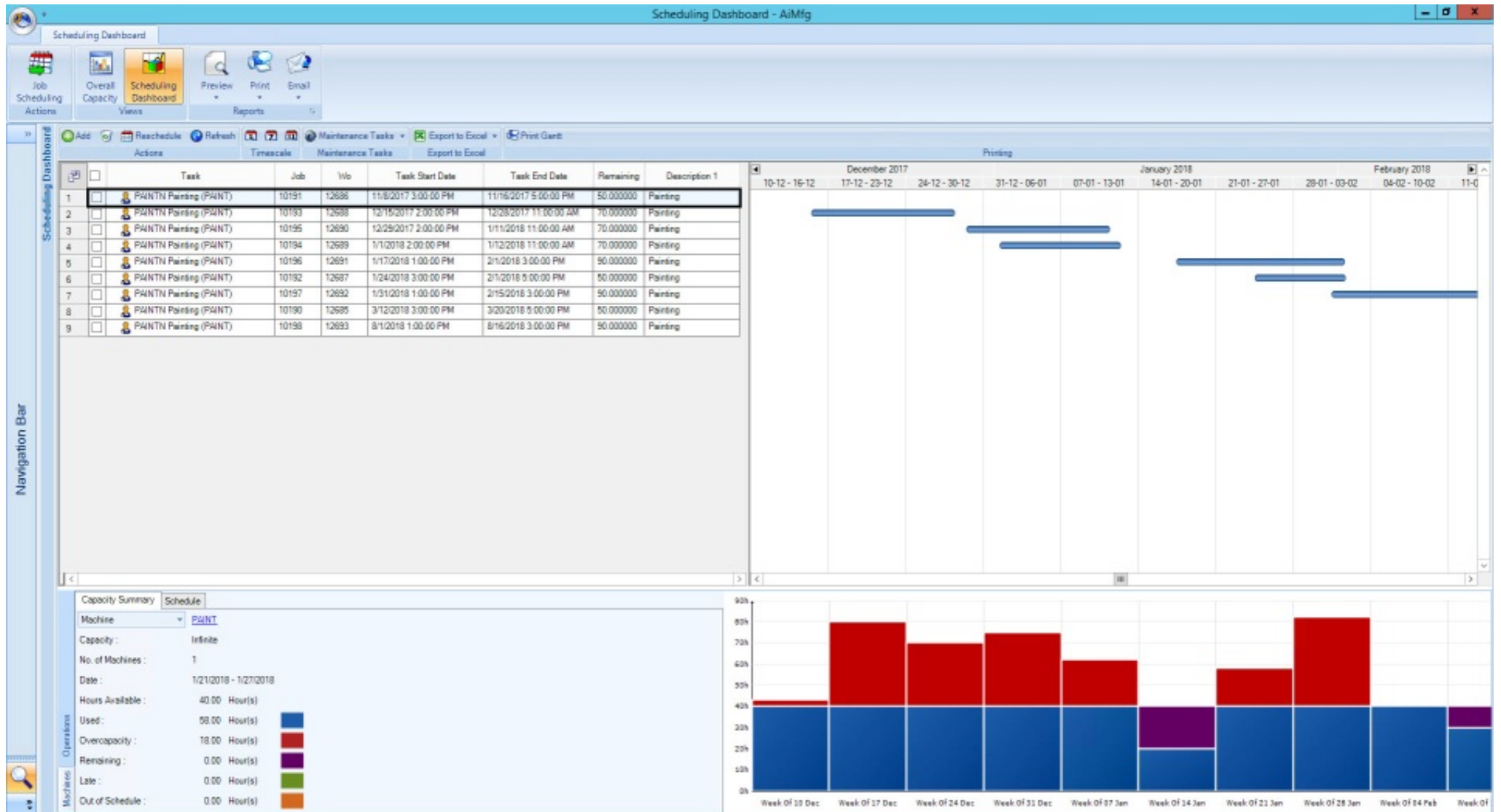
OVERVIEW	
PRODUCT NAME	Genius ERP
BUSINESS SECTORS	
DISTRIBUTION	✗
GOVERNMENT & NPO	✗
MANUFACTURING	✓
RETAIL	✗
SERVICES	✗
INDUSTRY	
AEROSPACE & DEFENSE	✓
AUTOMOTIVE	✓
CHEMICAL	✗
CONSTRUCTION	✗
COSMETICS	✗
ELECTRONICS	✗
ENERGY/POWER/UTILITIES	✗

ENGINEERING	X
FASHION	X
FINANCIAL SERVICES	X
FOOD & BEVERAGE	X
LOCAL GOVERNMENT	X
MEDIA	X
MEDICAL & HEALTHCARE	X
METALWORKING	✓
OILFIELD	X
PACKAGING	X
PAINT & ADHESIVES	X
PHARMACEUTICAL	X
PLASTICS & RUBBER	X
PRINT & DESIGN	X
RENTAL	X
TELECOMMUNICATIONS	X
WOODWORKING	X
CANNABIS	X
EDUCATION	X
NONPROFIT	X

ERP SOFTWARE FEATURES	
BILLING	✓
BUSINESS INTELLIGENCE/ANALYTICS	✓
COSTING	✓
CRM	✓
CUSTOMER SERVICE	✓
PRODUCT DESIGN	✗
FINANCIALS & ACCOUNTING	✓
HR	✗
INVENTORY MANAGEMENT	✓
ORDER MANAGEMENT	✓
PLANNING & SCHEDULING	✓
PROJECT MANAGEMENT	✓
PURCHASING	✓
QUALITY CONTROL	✓
SALES	✓
SHIPPING & DISTRIBUTION	✓
SUPPLY CHAIN MANAGEMENT	✓
WAREHOUSE MANAGEMENT	✓
ASSET MANAGEMENT	✗

DOCUMENT MANAGEMENT	✓
CUSTOMER SUITABILITY	
ENTERPRISE (1000+ EMPLOYEES)	✗
MEDIUM SIZE (251-1000 EMPLOYEES)	✓
SMALL BUSINESS (1-250 EMPLOYEES)	✓
ADDITIONAL PRODUCT INFO	
MULTI LANGUAGE	✓
MULTI CURRENCY	✓
CUSTOMIZABLE	✓
SYSTEM HOSTING	
CLOUD	✓
INSTALLED ON PREMISE	✓
FURTHER INFORMATION	
IMPLEMENTATION TIMEFRAME	24 weeks
PRICING	Subscription: \$75-125 per month per user. License cost: \$1000-3000 per user.

SOFTWARE SCREENSHOTS



Estimate - AMB

Grid Mode

Part Description

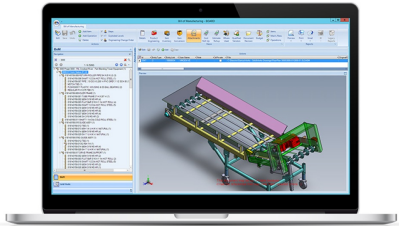
Part	Code	Qty	Description
119F1103	119F1103	1.000	1.000 TOP-HEAD COVER
119F1103	119F1103	1.000	1.000 FRONT WHEEL BEARING
119F1103	119F1103	1.000	1.000 STEER FABRICATION & INSTALLATION
119F1103	119F1103	1.000	1.000 STEER FABRICATION & INSTALLATION
119F1103	119F1103	1.000	1.000 STEER FABRICATION & INSTALLATION

Material

Material	Qty	Description
119F1103	15000.000	15000.000 PVC AND TUBE
119F1103	200.000	200.000 PLATE
119F1103	1000.000	1000.000 COIL
119F1103	20.000	20.000 FLANGE
119F1103	300.000	300.000 WHEEL
TOTAL	16,411.000	

Summary

Material: 15000.000 PVC AND TUBE 12.5307
 Plate: 200.000
 Coil: 1000.000
 Flange: 20.000
 Wheel: 300.000



Amount Total - Sales by Customer

Date: 01/01/1900 - 31/12/2010

Customer	Amount
COCG100	341,371,000
GMCO100	313,093,155
ZWOC100	293,024,000
JCNZ100	224,478,000
ZOMR100	214,824,950
LECO100	192,937,850
WIN001	142,592,850
BBN100	142,780,000
RCCD110	144,241,250
MEC100	139,944,470
ZSTA100	139,404,900
SMA100	130,202,000
APRI110	129,370,850
SON100	124,949,500

Amount Total - Sales by Subpartner

GM 47,970,000 (8.84%)
 GM 40,970,000 (8.84%)

Amount Total - Sales by Product Group

231.5

Amount Total - Sales by State/Province

World Map showing sales distribution across continents: NORTH AMERICA, SOUTH AMERICA, EUROPE, AFRICA, ASIA, AUSTRALIA. Major oceans: Pacific Ocean, Atlantic Ocean, Indian Ocean.

Bar chart showing sales by region:
 North PA: 1,177,443,370
 Europe: 1,143,540,470
 Africa: 1,248,622,000
 Asia: 744,448,330
 Oceania: 973,333,000
 South PA: 543,074,190
 AM: 122,262,000
 EU: 149,761,270
 SA: 277,000,000
 AU: 72,000,000